

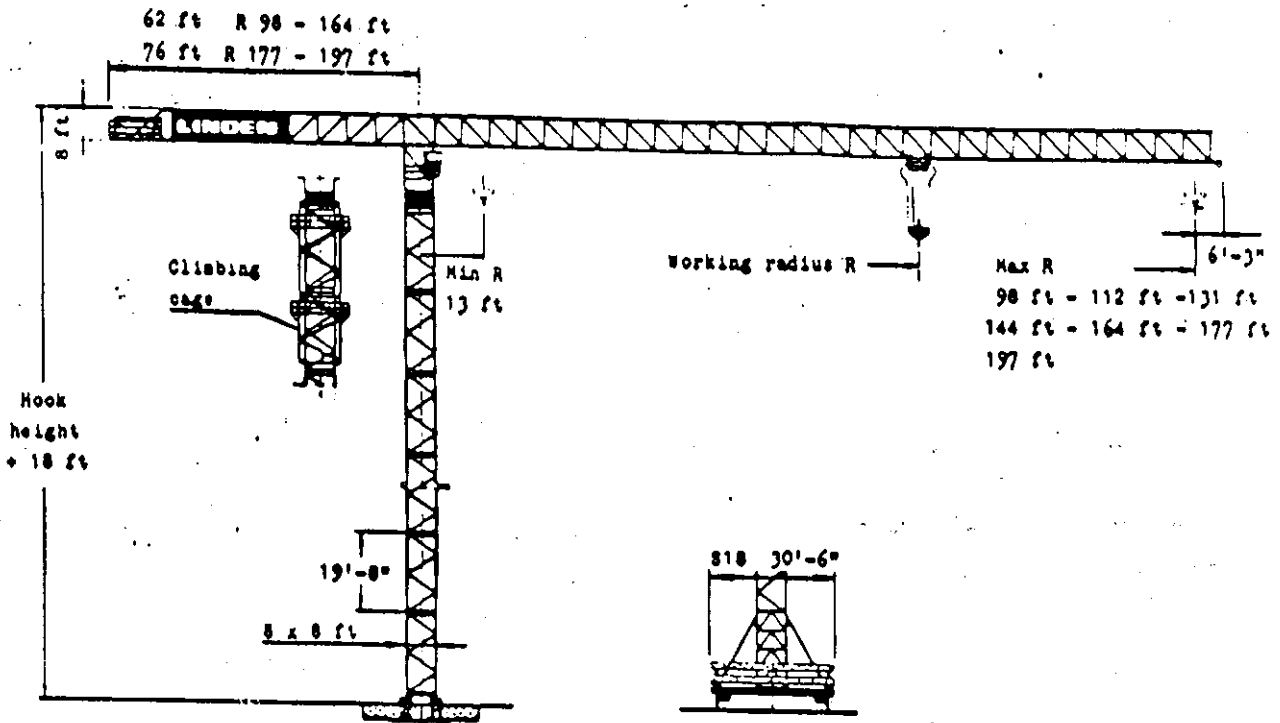
LINDEN Tower Crane

Quick-data

8702

Design Code DIN 15018 H1 B3

Power Supply 440V 60Hz



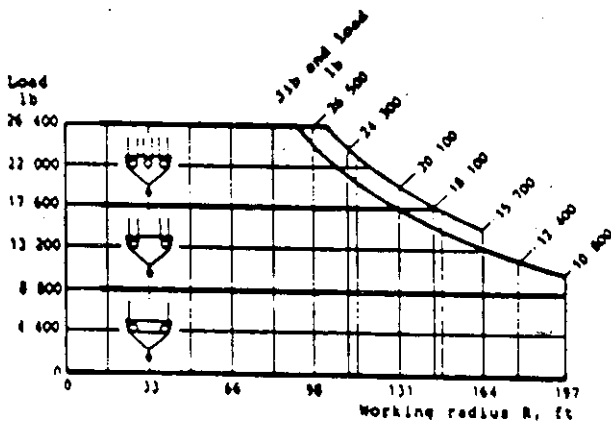
Stationary crane

Max free-standing hook height
284 ft

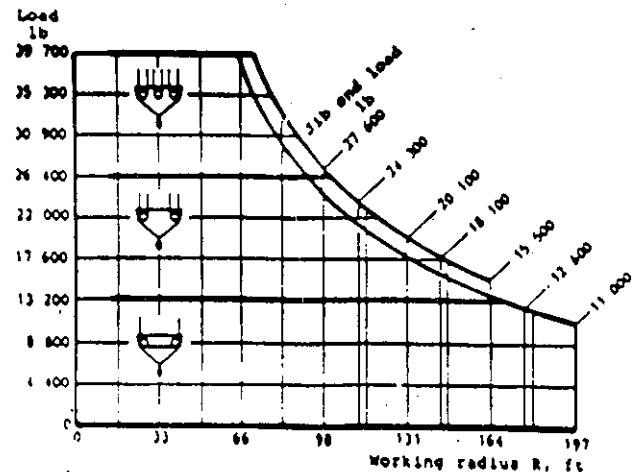
Rail mounted crane

Travelling carriage type	Max free-standing hook height	Rail centre gauge	Min. curve radius
S18	248 ft	26'-3.0"	53 ft

Hoisting capacity with machineries for max load 26 400 lb



Hoisting capacity with machineries for max load 39 700 lb



Tower cranes according to this specification are included in LINDEN MODULAR SYSTEM 8000. On request LINDEN-ALIMAX AB will be pleased to offer other crane compositions which are either within or outside this modular system.