

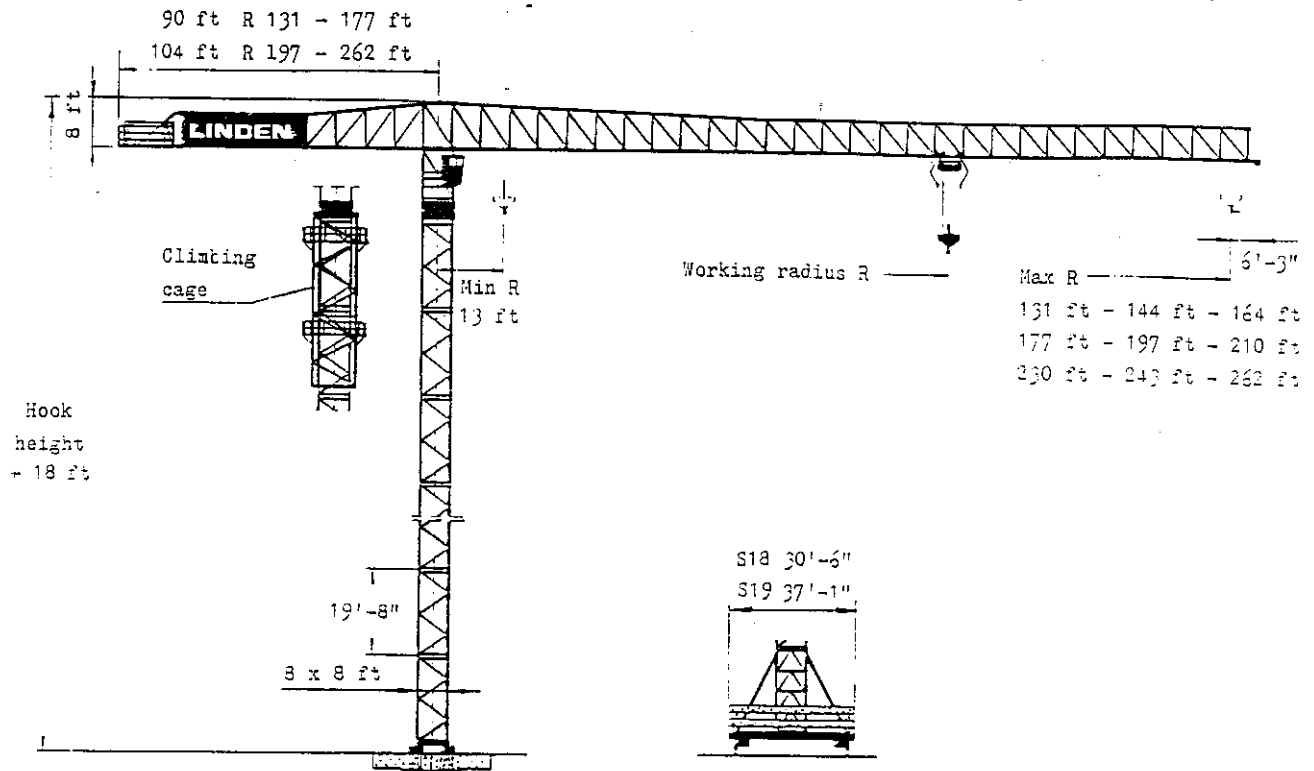
LINDEN Tower Crane

Quick-data

8852

Design Code DIN 15018 H1 B3

Power Supply 440 V 60 Hz



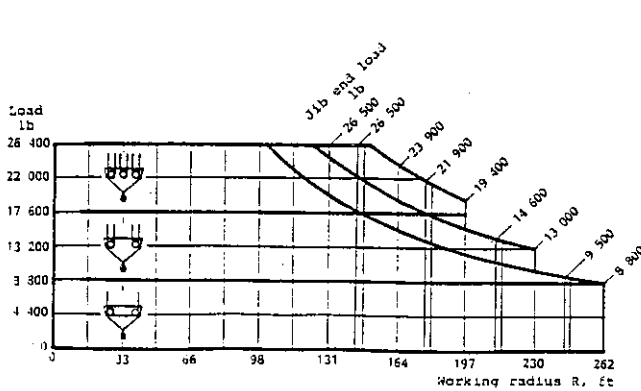
Stationary crane

Max free-standing hook height
245 ft

Rail mounted crane

Travelling carriage type	Max free-standing hook height	Rail centre gauge	Min. curve radius
S18	149 ft	26'-3.0"	53 ft
S19	215 ft	32'-9.7"	76 ft

Hoisting capacity with machineries for max load 26 400 lb



Hoisting capacity with machineries for max load 39 700 lb

