

LINDEN Tower Crane

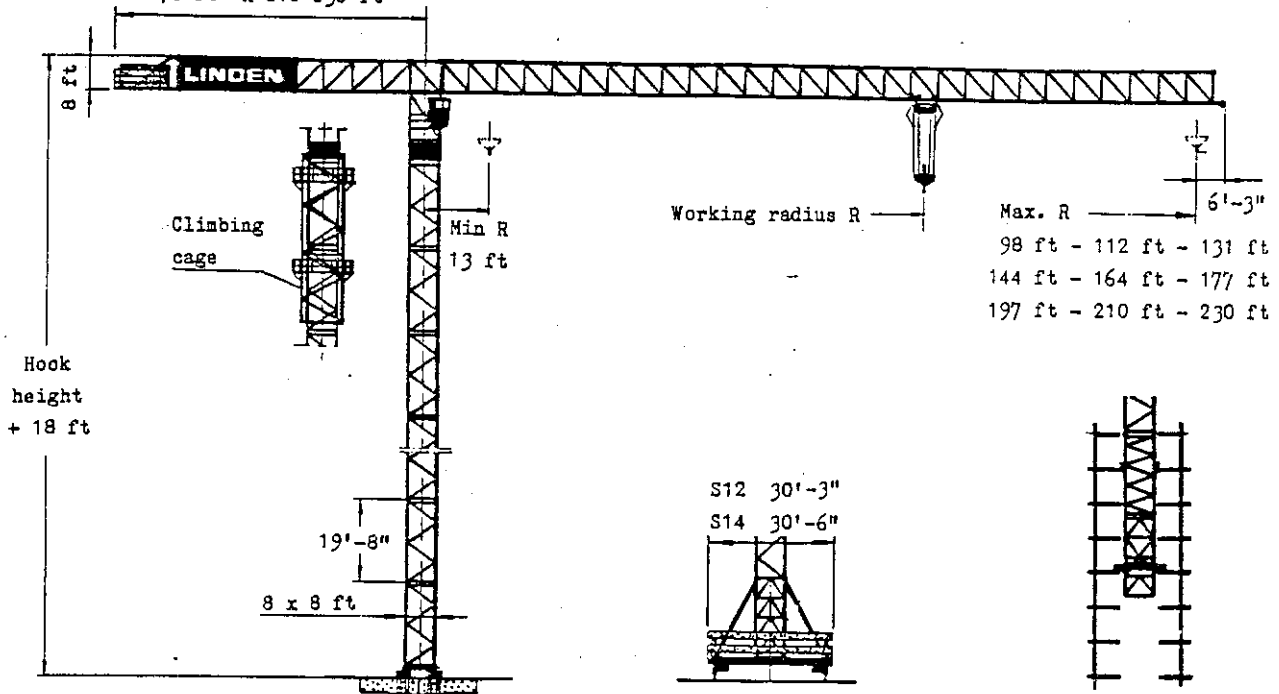
Quick-data

8652

Design Code DIN 15018 H1 B3

Power Supply 440 V 60 Hz

49 ft R 98-144 ft
 62 ft R 164-197 ft
 76 ft R 210-230 ft



Stationary crane

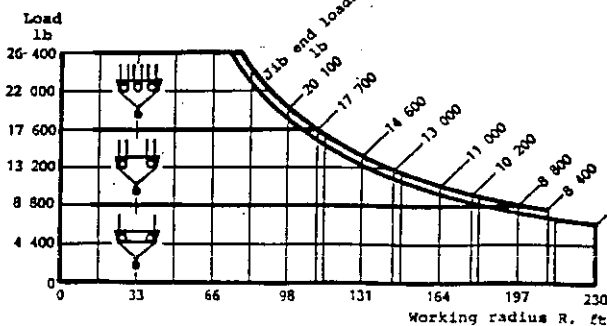
Rail mounted crane

Floor climbing crane

Max free-standing hook height
 264 ft

Travelling carriage type	Max free-standing hook height	Rail centre gauge	Min. curve radius	Max hook height above top floor
S12	187 ft	26'-3.0"	40 ft	136 ft
S14	267 ft	26'-3.0"	130 ft	

Hoisting capacity with machineries for max load 26 400 lb



Hoisting capacity with machineries for max load 39 700 lb

